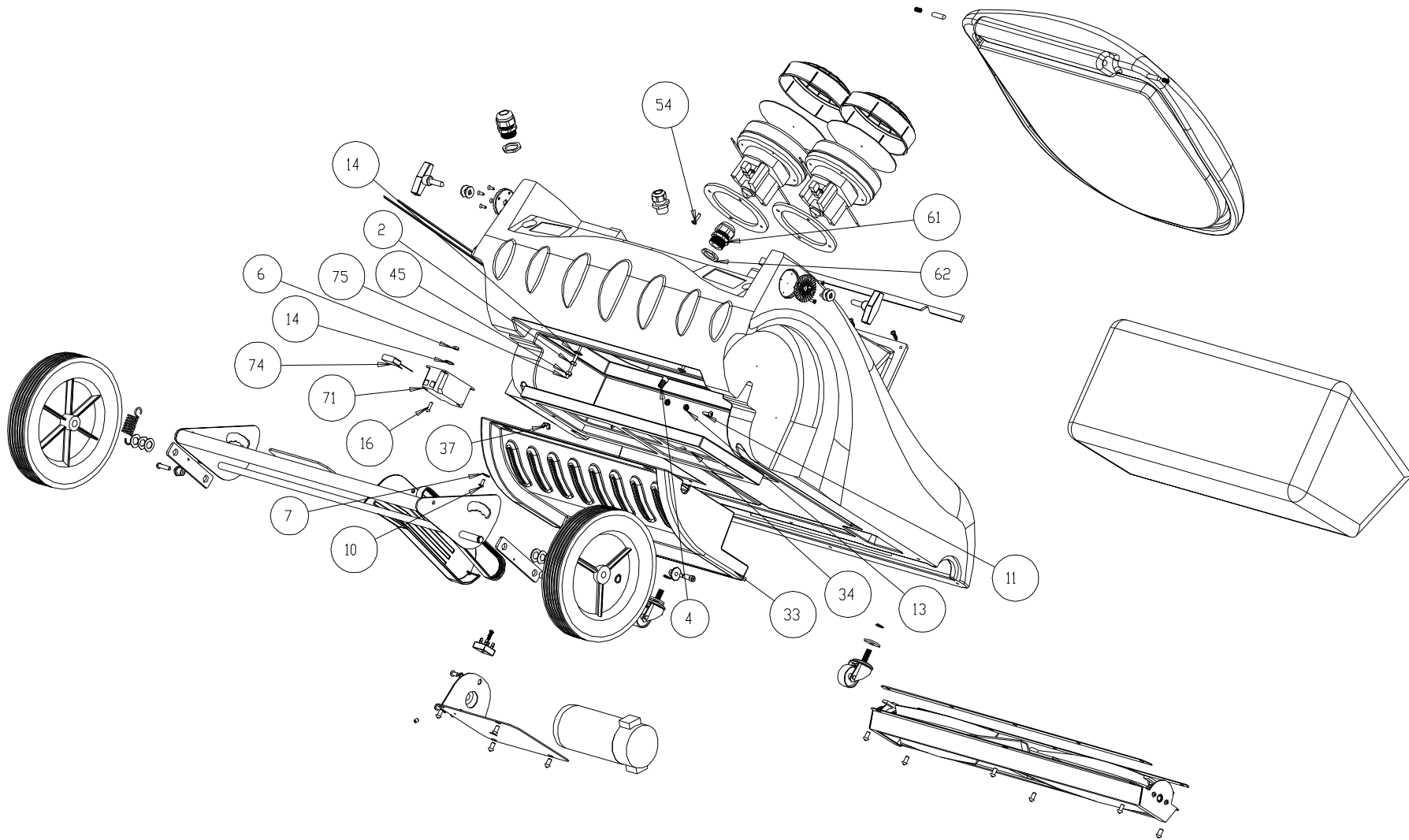


| REV | DATE    | ECN   | DESCRIPTION | BY | MATERIAL  | FINISH   | Phoenix Floor Maintenance Equipment Ltd<br>Unit 7 Padgets Lane,<br>South Moons Moat, Redditch B98 0RA<br>Phone: +44 (0) 1527 517161 Email: simondavies@phoenixfloor.co.uk |             |                |              |
|-----|---------|-------|-------------|----|---|--|---|-------------|----------------|--------------|
| A   | 1/2008  | 10741 | NEW RELEASE | KM | DWN KM  | -  | SCALE   | -           | SHEET 1 OF 2   |              |
| B   | 4/24/09 | -     | NEW RELEASE | AR | UNLESS OTHERWISE NOTED ALL TOLERANCES ARE ±0.02 | TACONY CORPORATION CLAIMS PROPRIETARY RIGHTS IN THE MATERIAL DISCLOSED HEREIN. THIS DRAWING IS ISSUED FOR ENGINEERING INFORMATION ONLY. IT MAY NOT BE REPRODUCED, NOR MAY THE INFORMATION HEREIN BE USED FOR MANUFACTURING PURPOSES WITHOUT WRITTEN PERMISSION FROM TACONY CORP. | DESCRIPTION <b>Proweave Sportsvac 230V</b>  |             |                |              |
| -   | -       | -     | -           | -  | -   | -  | A   | PART NUMBER | <b>93031TV</b> | REV <b>B</b> |

PART NUMBER

93031TV



| REV | DATE    | ECN   | DESCRIPTION | BY | MATERIAL  | FINISH   | PHOENIX FLOOR MAINTENANCE EQUIPMENT LTD<br>Unit 7 Padgets Lane,<br>South Moons Moat, Redditch B98 0RA<br>Phone: +44 (0) 1527 517161 Email: simondavies@phoenixfloor.co.uk |
|-----|---------|-------|-------------|----|---|--|---|
| A   | 1/2008  | 10741 | NEW RELEASE | KM | DWN KM  | SCALE  | SHEET 2 OF 2  |
| B   | 4/24/09 | -     | NEW RELEASE | AR | UNLESS OTHERWISE NOTED ALL TOLERANCES ARE ±0.02 | TACONY CORPORATION CLAIMS PROPRIETARY RIGHTS IN THE MATERIAL DISCLOSED HEREIN. THIS DRAWING IS ISSUED FOR ENGINEERING INFORMATION ONLY. IT MAY NOT BE REPRODUCED, NOR MAY THE INFORMATION HEREIN BE USED FOR MANUFACTURING PURPOSES WITHOUT WRITTEN PERMISSION FROM TACONY CORP. | DESCRIPTION <b>Proweave Sportsvac 230V</b>  |
| -   | -       | -     | -           | -  | -   | -  | A PART NUMBER <b>93031TV</b> REV B  |

PART NUMBER

93031TV

| ITEM | QTY | PART NO.   | DESCRIPTION                                     |
|------|-----|------------|---|
| 1    | 12  | 00086      | SCREW, 1/4"-20 X 1/2"L, RNDHD, PH, ZP           |
| 2    | 2   | 01604      | NUT-FINISHED HEX #10-32                         |
| 3    | 1   | 02011      | SCREW, 1/4"-20 X 5/16"L, SET, ALLEN, CUPPNT, BD |
| 4    | 2   | 02195      | NUT-SCREW CONNECTOR                             |
| 5    | 4   | 02568      | WASHER, 0.375", PLAIN, ZP                       |
| 6    | 4   | 02625      | NUT-HEX. LOCK (KEPS) #10-32                     |
| 7    | 4   | 00851      | WASHER-PLAIN 1/4"                               |
| 8    | 2   | 03321      | WASHER, 0.391", PLAIN, ZP                       |
| 9    | 2   | 03536      | WASHER, 0.375", LOCK, SPLIT, ZP                 |
| 10   | 4   | 03660      | SCREW, #10-24 X 7/16"L, PNHD, PH, ZP            |
| 11   | 1   | 04735      | SCREW-PHILLIPS TRUSS HEAD MACHINE #10-24 X 3/4  |
| 12   | 2   | 07870      | WASHER, 0.25", LOCK, INTERNAL TOOTH, ZP         |
| 13   | 2   | 10892      | NUT-HEX LOCK #10-24                             |
| 14   | 6   | 11385      | WASHER, SEALING #10                             |
| 15   | 2   | 11423      | BAG, POLY, 20" X 24" *                          |
| 16   | 4   | 12896      | SCREW, #10-32 X 5/8"L, RHDHD, PH, ZP            |
| 17   | 1   | 14142      | WASHER, 0.265", PLAIN, ZP                       |
| 18   | 2   | 15162      | SCREW, 1/4"-20 X 1/2"L, FHD, PH, ZP             |
| 19   | 2   | 15357      | SPRING, LATCH RELEASE                           |
| 20   | 2   | 16169      | NUT-CONDUIT                                     |
| 21   | 2   | 18706      | WIRE TIE, 15", BLACK                            |
| 22   | 8   | 19255      | SCREW, #8-32 X 1/2"L, FHD, SOCKET, BD           |
| 23   | 4   | 19616      | WASHER, 0.563", PLAIN, SS                       |
| 24   | 2   | 19797      | WHEEL, 10", PLASTIC HUB                         |
| 25   | 2   | 19798      | BRACKET, GROOVED                                |
| 26   | 1   | 19802      | BELT, BRUSH DRIVE                               |
| 27   | 1   | 19816      | FILTER BAG, CLOTH                               |
| 28   | 2   | 19818      | SPRING, WAHSER, 1/2"                            |
| 29   | 2   | 19834      | FILTER, VAC INTAKE, 5.8"                        |
| 30   | 1   | 19835      | PULLEY, BRUSH, DRIVE                            |
| 31   | 1   | 19836      | MOUNT, BRUSH MOTOR                              |
| 32   | 2   | 19841      | ARM, WHEEL PIVOT                                |
| 33   | 1   | 19854      | COVER, EXHAUST                                  |
| 34   | 1   | 19855      | EXHAUST FILTER                                  |
| 35   | 2   | 19864      | PIN, LID HINGE                                  |
| 36   | 1   | 19870      | ASS'Y, BRUSH                                    |
| 37   | 2   | 19975      | NUT-WING (10-32) ZINC PL                        |
| 38   | 1   | 19984_230V | ASSEMBLY, HANDLE, WAV                           |
| 39   | 2   | 19999      | SCREW, 1/4"-20 X 1-1/4"L, RHDHD, PH, ZP         |
| 40   | 1   | 33039      | CARTON, TRUVDX, W/ LOGO *                       |

| ITEM | QTY | PART NO. | DESCRIPTION                                   |
|------|-----|----------|---|
| 41   | 2   | 30077    | GASKET, BRUSH SHOE                            |
| 42   | 1   | 30078    | GASKET, HOOD *                                |
| 43   | 2   | 30088    | FILTER, VAC INLET, 5.8"                       |
| 44   | 2   | 30089    | GASKET, 5.8" MOTOR                            |
| 45   | 2   | 30358    | NUT, NYLON LOCK #10-32                        |
| 46   | 2   | 30461    | PIVOT SLEEVE, WHEEL                           |
| 47   | 2   | 30464    | PIVOT SLEEVE, WHEEL                           |
| 48   | 2   | 30466    | SPRING, TENSION                               |
| 49   | 1   | 30491    | ASS'Y, AXLE WHEEL                             |
| 50   | 2   | 30507    | SNAP RING, 1/2", EXTERNAL                     |
| 51   | 2   | 30558    | KNOB, #3/8-16                                 |
| 52   | 2   | 30617    | SCREW, 1/4"-20, SHCS, SHOULDER 5/16"D X 3/4"L |
| 53   | 1   | 30618    | DECAL, CARPET LEVEL *                         |
| 54   | 8   | 30620    | SCREW, #10-16 X 3/4"L, PNHD, PH, ZP, TAPTITE  |
| 55   | 2   | 31209    | WHEEL, CASTER                                 |
| 56   | 2   | 31306    | VAC-MOTOR 240V                                |
| 57   | 1   | 33036    | CHASSIS                                       |
| 58   | 1   | 33047    | DECAL, NO LOGO, TRUVDX, 3.5" X 15.5", BLK*    |
| 59   | 1   | 33057    | BELT COVER                                    |
| 60   | 1   | 33061    | BRIDGE RECTIFIER, 25 A                        |
| 61   | 2   | 33191    | STRAIN RELIEF, LIQ. TITE                      |
| 62   | 2   | 33192    | NUT, LOCK, STRAIN RELIEF, NI-PLATE            |
| 63   | 1   | 33193    | FILTER CHUTE                                  |
| 64   | 4   | 33195    | SCREW, #10-16 X 3/4"L, PNHD, PH, BD, TAP-AB   |
| 65   | 1   | 33451    | SCREW, #10-24 X 5/8"L, PNHD, PH, ZP, TAP-F    |
| 66   | 1   | 33500    | LID   |
| 67   | 1   | 33501    | BRUSH MOTOR, 230V                             |
| 68   | 1   | 33502    | GASKET, CHUTE                                 |
| 69   | 1   | 33504    | WIRING HARNESS, 230V WAV *                    |
| 70   | 1   | 33505    | 230V POWER CORD 25M *                         |
| 71   | 1   | 33506    | EMI FILTER, POWER                             |
| 72   | 1   | 33508    | EMI FILTER, MOTOR                             |
| 73   | 1   | 33509    | 80632 CUT AT 15" L *                          |
| 74   | 1   | 33628    | CAPACITOR, EMI FILTER                         |
| 75   | 2   | 33630    | SCREW, #10-32 X 3"L                           |
| 76   | 1   | 80632    | NEOPRENE GASKET MATERIAL, 1" X 3/8" *         |
| 77   | 1   | 90701    | FILTER BAG, PAPER *                           |
| 78   | 2   | PD8+     | STRAIN RELIEF, LIQ TITE                       |
| 79   | 1   | X9214+   | LABEL, GROUND SYMBOL *                        |
| 80   | 1   | 15139    | TERMINAL QD FEMALE 14/16 GA *                 |

\*NOT SHOWN

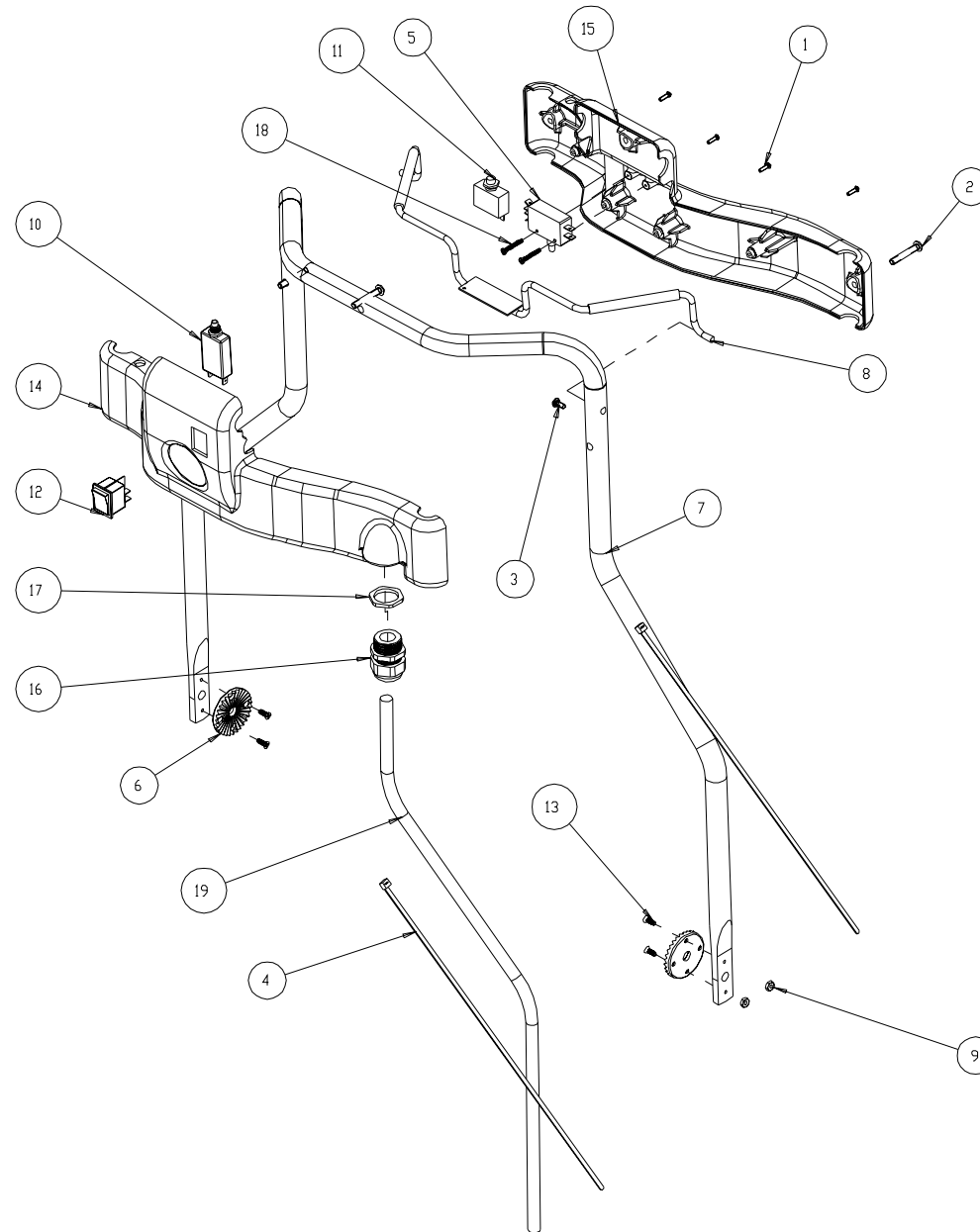
| REV | DATE    | ECN   | DESCRIPTION | BY | MATERIAL  | FINISH   | Phoenix Floor Maintenance Equipment Ltd<br>Unit 7 Padgets Lane,<br>South Moons Moat, Redditch B98 0RA<br>Phone: +44 (0) 1527 517161 Email: simondavies@phoenixfloor.co.uk |   |
|-----|---------|-------|-------------|----|---|--|---|---|
| A   | 1/2008  | 10741 | NEW RELEASE | KM | DWN KM  | SCALE  | SHEET   | 3 OF 3                                  |
| B   | 4/24/09 | -     | NEW RELEASE | AR | UNLESS OTHERWISE NOTED ALL TOLERANCES ARE ±0.02 | TACONY CORPORATION CLAIMS PROPRIETARY RIGHTS IN THE MATERIAL DISCLOSED HEREIN. THIS DRAWING IS ISSUED FOR ENGINEERING INFORMATION ONLY. IT MAY NOT BE REPRODUCED, NOR MAY THE INFORMATION HEREIN BE USED FOR MANUFACTURING PURPOSES WITHOUT WRITTEN PERMISSION FROM TACONY CORP. | DESCRIPTION <b>Proweave Sportsvac 230V</b>  |   |
| -   | -       | -     | -           | -  | -   | -  | A   | PART NUMBER <b>93031TV</b> REV <b>B</b> |

PART NUMBER

19984

## BILL OF MATERIALS

| ITEM | QTY | PART NUMBER | DESCRIPTION                               |
|------|-----|-------------|---|
| 1    | 4   | 16924       | SCREW, #6-32 X 3/4"L, PAN HEAD            |
| 2    | 3   | 01978       | SCREW, 1/4"-20 X 1-1/2"L, RHDHD, PH, ZP   |
| 3    | 1   | 03261       | SCREW, TCT(F) PAN HEAD, #10-32            |
| 4    | 4   | 18706       | WIRE TIE, 15", BLACK                      |
| 5    | 1   | 19357       | SWITCH, PUSH BUTTON, DPST, 20A            |
| 6    | 2   | 19798       | BRACKET, GROOVED                          |
| 7    | 1   | 19829       | HANDLE, MAIN                              |
| 8    | 1   | 19849       | TRIGGER, BRUSH SWITCH                     |
| 9    | 4   | 30074       | NUT, HEX #8-32 ZP                         |
| 10   | 1   | 32935       | CIRCUIT BREAKER, PUSH BUTTON, 3A          |
| 11   | 1   | 32964       | 10 AMP CIRCUIT BREAKER                    |
| 12   | 1   | 32966       | SWITCH, ROCKER, DPST, 20A                 |
| 13   | 4   | 33188       | SCREW, #8-32 X 1/2"L, FHD, PH, ZP, TAP-F  |
| 14   | 1   | 33189       | SWITCH BOX, TOP                           |
| 15   | 1   | 33190       | SWITCH BOX, BOTTOM                        |
| 16   | 1   | 33191       | STRAIN RELIEF, LIQ. TITE                  |
| 17   | 1   | 33192       | NUT, LOCK, STRAIN RELIEF, NI-PLATE        |
| 18   | 2   | 33194       | SCREW, #6-13 X 1L, PNHD, PH, ZP, PLASTITE |
| 19   | 1   | 33452       | CONTROL CABLE                             |



| REV | DATE    | ECN   | DESCRIPTION | BY | MATERIAL  | FINISH   | PHOENIX FLOOR MAINTENANCE EQUIPMENT LTD<br>Unit 7 Padgets Lane,<br>South Moons Moat, Redditch B98 0RA<br>Phone: +44 (0) 1527 517161 Email: simondavies@phoenixfloor.co.uk |
|-----|---------|-------|-------------|----|---|--|---|
| A   | 4/08    | 10787 | NEW RELEASE | KM | DWN KM  | SCALE  | SHEET 1 OF 1  |
| B   | 4/24/09 | -     | NEW RELEASE | AR | UNLESS OTHERWISE NOTED ALL TOLERANCES ARE ±0.02 | TACONY CORPORATION CLAIMS PROPRIETARY RIGHTS IN THE MATERIAL DISCLOSED HEREIN. THIS DRAWING IS ISSUED FOR ENGINEERING INFORMATION ONLY. IT MAY NOT BE REPRODUCED, NOR MAY THE INFORMATION HEREIN BE USED FOR MANUFACTURING PURPOSES WITHOUT WRITTEN PERMISSION FROM TACONY CORP. | DESCRIPTION <b>Proweave Sportsvac 230V</b>  |
| -   | -       | -     | -           | -  | -   | -  | A PART NUMBER <b>19984</b> REV <b>B</b>   |

